

CELL COUNTING CHAMBERS

SPERMTRACK[®] Reusable cell counting chamber



20 microns is the depth recommended by **WHO**. Available also in 10 microns.



If you are thinking about a **certificate of quality**, camera and cover slips are numbered, so they are traceable and can be included.

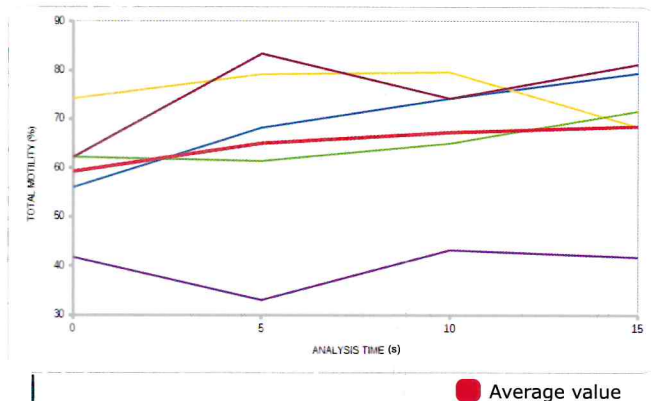


Precise calculation of concentration and motility. The cells do not coalesce in glass, since it is fabricated with the **best materials** that prevent this phenomenon.

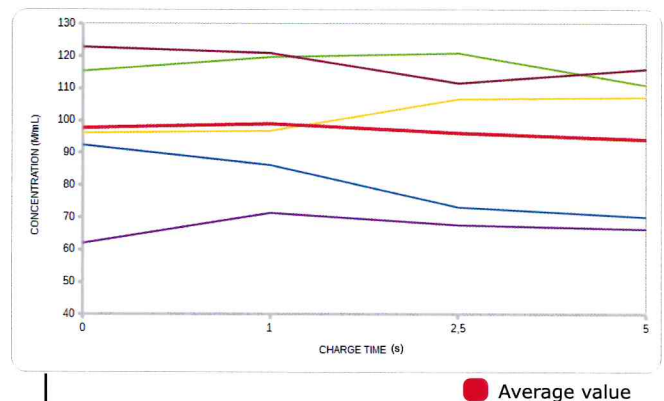


Not all are technical advantages. Select the unit that most match your style and laboratory, between different **colours** fixed on **anodised aluminium**, highly resistant to daily use.

Scientific references



→ Motility doesn't vary with the cover collocation time.



→ Concentration remains homogeneous.

Soler et al. Effect of counting chamber on seminal parameters, analyzing with the ISAS[®]v1
Rev Int Androl. 2012; 10(4): 132-138.
No significant differences were found between individuals.